

綠惜歲晚 電器回收計劃 2026

年近歲晚，本屋苑／住宅大廈將與「綠在屯門」合作，舉辦歲晚回收服務，收集住戶在大掃除後需要棄置的廢舊電器，讓它們可以妥善回收、循環再造，以及轉廢為材。現誠邀各住戶將合適的廢舊電器放置於屋苑／住宅大廈提供的暫存位置，一同支持環保。

參與屋苑：

瑜翠園

收集日期：2026年1月27日至2月13日

收集地點：

瑜翠園垃圾房

垃圾房開放時間：

上午七時三十分至下午四時三十分

查詢電話：

2458 7256



接受

(只限家用電器，不論好壞。)

✓ 四電一腦 (恕不回收商用電器，詳見「不接受」部分)

- 冷氣機、雪櫃、洗衣機、電視機、乾衣機、抽濕機、顯示器、電腦主機、手提電腦、平版電腦、打印機、掃描器

✓ 電腦配件 (鍵盤、滑鼠、USB、喇叭等)

✓ 小型家用電器 (風扇、電話、熨斗、焗爐等)



不接受

✗ 商用電器

- 製冷量超過3匹的冷氣機
- 洗衣量超過10公斤的洗衣機
- 屏幕尺寸超過 100 吋的屏幕 (以對角斜角量度的電視機或電腦屏幕)
- 重量超過30公斤的打印機或掃描器

✗ 鬚刨

✗ 洗腎機

✗ 抽油煙機

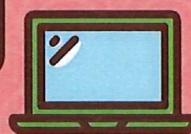
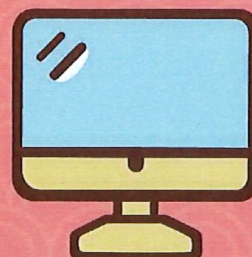
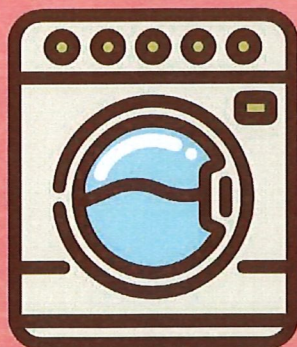
✗ 酒櫃 (壓縮機制冷)

✗ 大型煮食爐

✗ 按摩椅

✗ 電子體溫計

✗ 嵌入式家電



備註：如有任何爭議，「綠在屯門」保留最終決定權。



Lunar Year-End Recycling Programme for Home Appliances 2026

As households conduct their traditional spring cleaning, many may wish to discard unwanted home appliances. In collaboration with GREEN @ TUEN MUN, the Estate Management Office has arranged a recycling drive for small home appliances. Residents are encouraged to deposit their unwanted items at the designated collection point listed below. We encourage everyone to adopt an eco-friendly lifestyle and wish you a Green Lunar New Year.

Participating housing estate :

Peridot Court

Collection Period :

27 Jan – 13 Feb 2026

Collection Point :

Peridot Court Refuse Room

Refuse room opening hours

07:30 – 16:30

Enquiry Hotline :

2458 7256



Acceptable

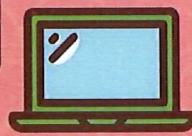
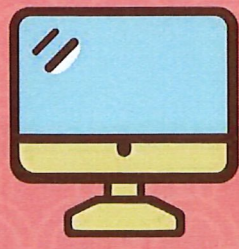
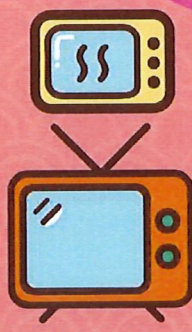
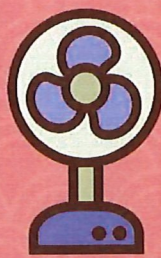
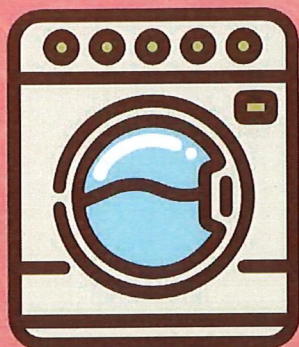
(Only home appliances, no matter it works or not)

- ✓ Regulated electrical equipment
 - Air-conditioners, refrigerators, washing machines, televisions, dehumidifiers, tumble dryers, computers (including desktop, laptop and tablet), printers, scanners and monitors
- ✓ Computer accessories
 - such as keyboards, mouse units, memory sticks and speakers
- ✓ Small household electrical appliances
 - such as fans, smartphones, clothes irons and ovens



Unacceptable

- ✗ Commercial electrical equipment
 - Air conditioners with a rated cooling capacity exceeding 7.5 kilowatts (3HP)
 - Washing machines with a rated washing capacity exceeding 10 kg
 - Monitors with the size of the display screen exceeding 100 inches (measured diagonally)
 - Printers and scanners exceeding 30 kg in weight
- ✗ Wine cellars (compressor cooling)
- ✗ Extractor hoods
- ✗ Large scale hobs
- ✗ Dialysis machines
- ✗ Electric shavers
- ✗ Massage Chair
- ✗ Electronic Thermometer
- ✗ Built in Appliances



Remark: GREEN@TUEN MUN reserves the rights of final decision in case of any dispute.

